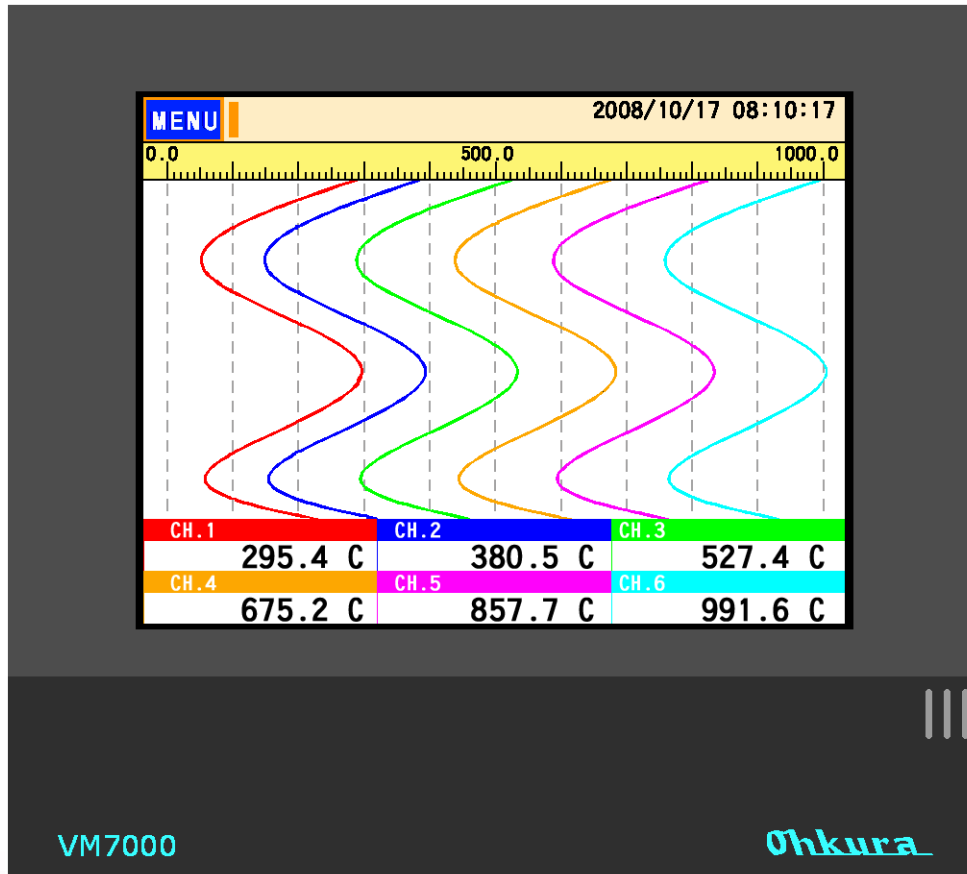




VM7000 PAPERLESS RECORDER

Coming Soon!



Easy Operation by Touch Panel
Powerful and Cost Effective

Features

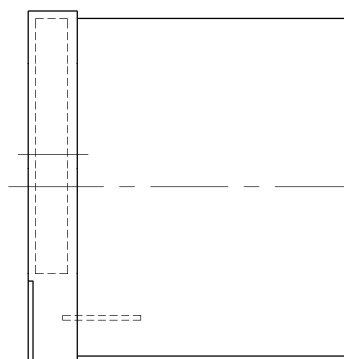
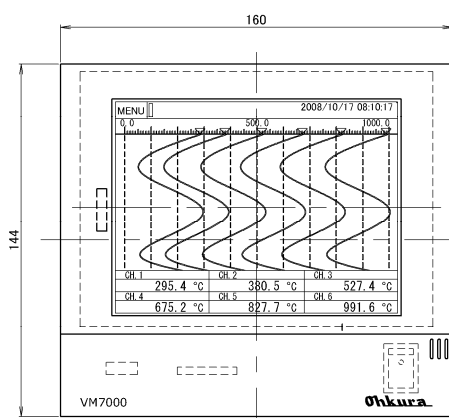
- Various display by Touch Panel 5.7 Inch (TFT)
- Universal Input and Range
- Various Input 3, 6, 9, 12 CH
- PC support software supplied as standard
- Large capacity storage by SD card
- IP65: Dust- Proof, Water- Proof
- Ethernet function as standard
- CE Approved (plan)

VM7000 PAPERLESS RECORDER

SPECIFICATIONS

Input	Number of points	3, 6, 9, 12 points When the DI/DO option card is selected, the number is limited.	Recording function	Recording medium	SD card (Max 32GB)
	Measuring cycles	100ms		Internal memory	8MB
	Recording cycle	1sec to 60mins		Recording method	Writing starts in fixed cycles by turning ON the REC key on the front panel. Data is recorded in a new file every time the recording starts.
	Input signal	Thermocouple: (K,E,J,T,WRe5-26,N, PL II,U,L,R,S,B,PR40-20,Au-Fe) Resistance bulb: (Pt100,JPt100) DC voltage: (-10 to +10mV,0 to 20mV,0 to 50mV, -200 to +200mV, -1 to +1V, -10 to +10V, 0 to 5V) DC current: (external shunt resistance) (4 to 20mA)		Data save cycles	Links to refreshment cycle of the trend display
Performance	Indication accuracy	±(0.1%+1digit) of input range	Alarm function	Number of settings	Up to 4 alarms for each channel are settable
Display	Life of backlight	50,000 hours		Output	Number of points;1 (transistor output)
	Display contents	<ul style="list-style-type: none"> •Trend display (in vertical and horizontal direction) selected in the refreshment cycles of 1 sec to 60 minutes. Scale display/non-display selectable •Bar graph (refresh cycle: 1 second) •Digital display (refresh cycle: 1 second) •Event summary display (alarm and message summary) •Ethernet log display •Historical trend display (SD card memory data.) 	Communication	Ethernet	HTTP server, FTP server, and MODBUS TCP/IP protocol
			General	Mounting Method	Panel-mounted (vertical panel)
				Material	PC-ABS (case, bezel)
				External dimensions	<Panel mount> 160(W) × 144(H) × 150(D) mm
				Weight	About 1.5kg
			Option	Power supply voltage	100V to 240V AC, 50/60 Hz
				Power consumption	About 47VA (at 200VAC)
				DO card DI/DO card	DO: 6 points (relay output) DI/DO:9 points for each (transistor input/output)
				Communication	RS-485 MODBUS protocol

DIMENSIONS



Ohkura

大倉電気株式会社

OHKURA ELECTRIC CO., LTD.

Head Office / Factory Saitama, JAPAN

Sales Offices Tokyo, Osaka, Nagoya, Kyushu, Tohoku

URL <http://www.ohkura.co.jp/>

e-mail (in English) intsales@ohkura.co.jp

Specifications are subject to change without notice.

For further information, a quotation or a demonstration please contact to: